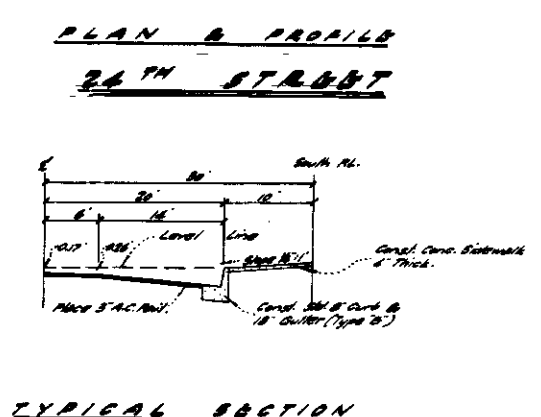
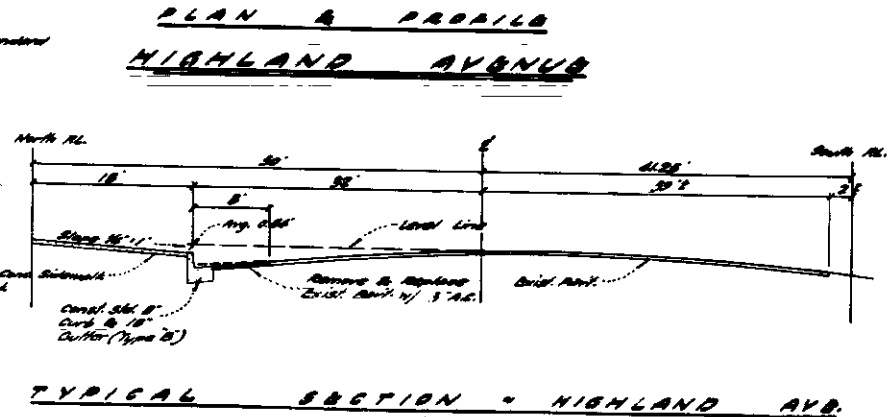
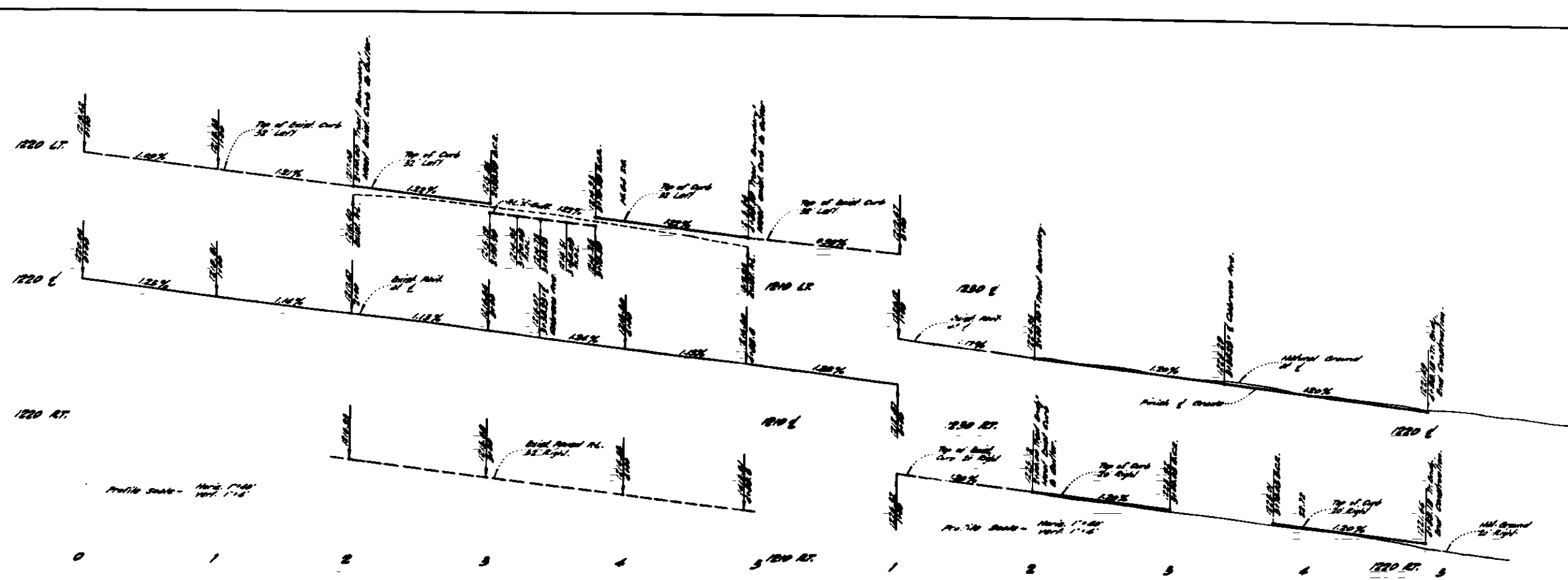


**GENERAL NOTES...**  
 All work shown on these plans shall be accomplished in accordance with applicable provisions of Specification No. 227, Revised Nov. 1965, & Standard Drawing No. 227, as set in the office of the City Engineer.  
 It shall be the contractor's responsibility to locate all existing utilities shown on these plans and any underground facilities shown or not shown on these plans. The Engineer will not be responsible for damage to any underground facilities.  
 BENCH MARK: City B.M. 10 - 2000' on sidewalk at North & 28th Street - Highland Ave. & Municipal St. Elev. = 1223.24'

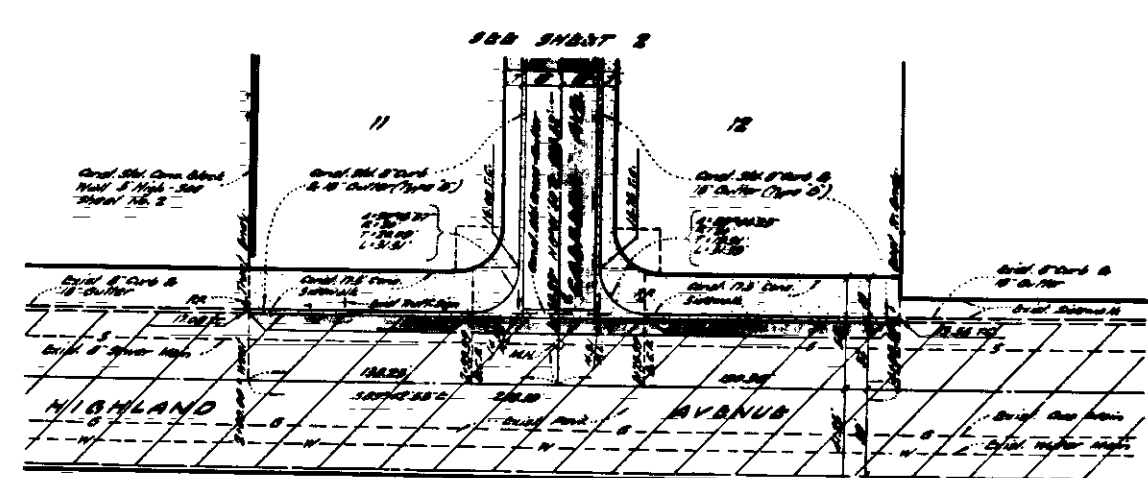


DEPARTMENT OF ENGINEERING  
**CITY OF SAN BERNARDINO**  
 STREET IMPROVEMENT PLANS - TRACT NO. 745  
 GARNER, TRACADIS & TROY  
 CIVIL ENGINEERING - LAND SURVEYING  
 350 NORTH ARROWHEAD AVENUE  
 SAN BERNARDINO, CALIFORNIA  
 SUBMITTED BY *John Lee* REFERENCE DRAWING

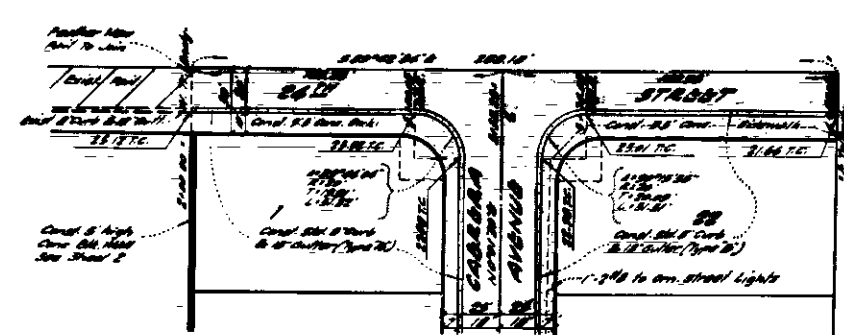


Profile Scale - Horiz. 1" = 40'  
Vert. 1" = 4'

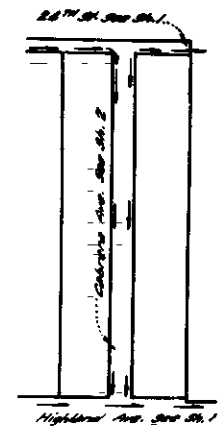
Profile Scale - Horiz. 1" = 40'  
Vert. 1" = 4'



Plan Scale - 1" = 40'



Plan Scale - 1" = 40'

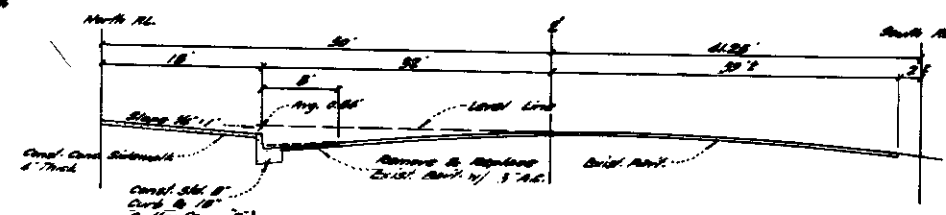


INSET MAP  
Scale - 1" = 200'

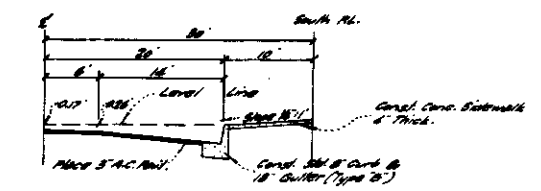
**GENERAL NOTES...**  
All work shown on these plans shall be accomplished in accordance with applicable provisions of Specification No. 227, Revised Nov. 1945, & Standard Drawing No. 227, as filed in the office of the City Engineer.  
(1) shall be the contractor's responsibility to locate and mark all existing utilities shown on these plans. The Engineer will not be responsible for damage to any underground utilities.  
BENCH MARK: City & S.M.S.D. - 3800 ft. in sidewalk at North & 38 West - at Highland Ave. & Municipal St. Elev. = 722.34.

PLAN & PROFILE  
HIGHLAND AVENUE

PLAN & PROFILE  
24TH STREET



TYPICAL SECTION - HIGHLAND AVE.  
Scale - 1" = 20'



TYPICAL SECTION

DEPARTMENT OF ENGINEERING  
**CITY OF SAN BERNARDINO**  
STREET IMPROVEMENT PLANS - TRACT NO. 745  
GARNER, TRACADAS & TROY  
CIVIL ENGINEERING - LAND SURVEYING  
350 NORTH ARROWHEAD AVENUE  
SAN BERNARDINO, CALIFORNIA  
SUBMITTED BY *[Signature]* REFERENCE DRAWING